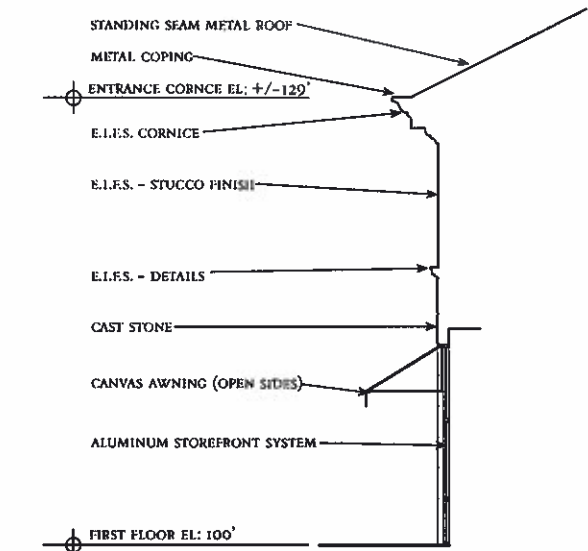
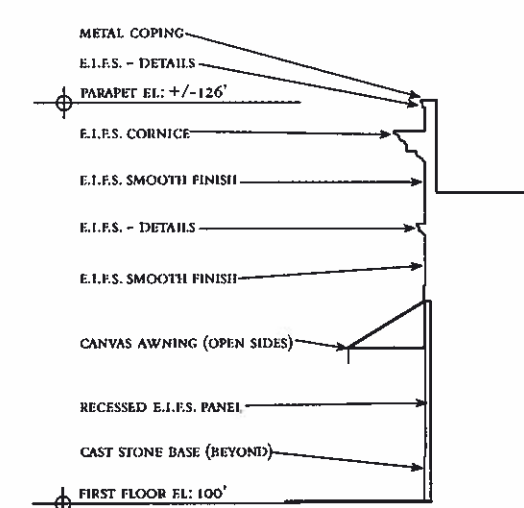


APPROVED PLAN
PERMIT NO. DR 07-15
RESOLUTION NO. 07-080
ACTION: APPROVED DENIED
DATE 12/4/07 *w/conditions*

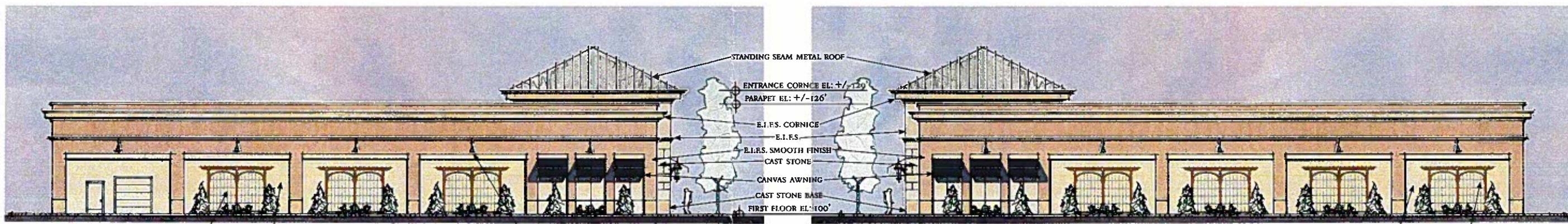
PLAN



SECTION THROUGH ENTRY TOWER
SCALE: 1/8" = 1'-0"

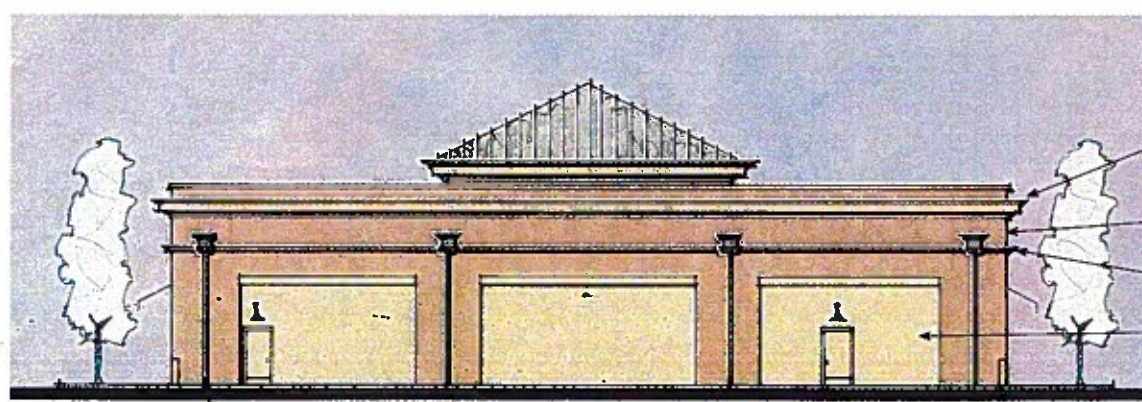


SECTION THROUGH PARAPET
SCALE: 1/8" = 1'-0"

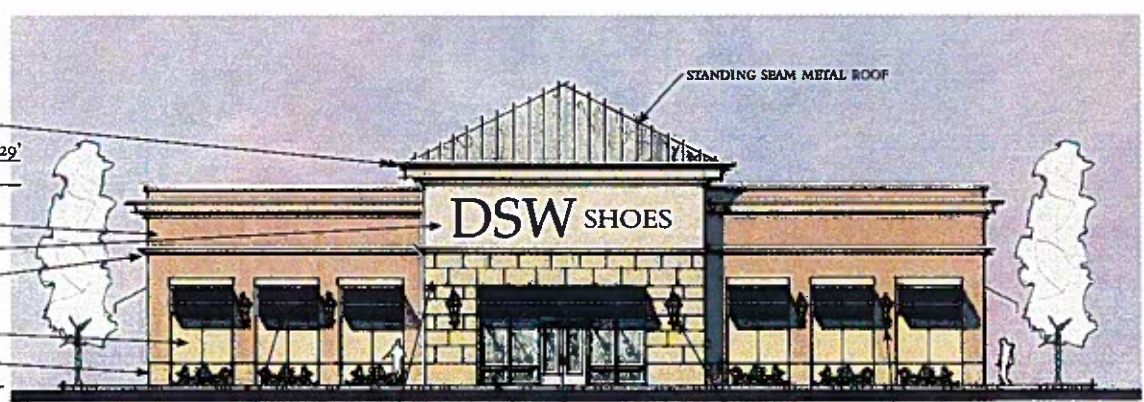


WEST ELEVATION

EAST ELEVATION



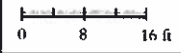
NORTH ELEVATION



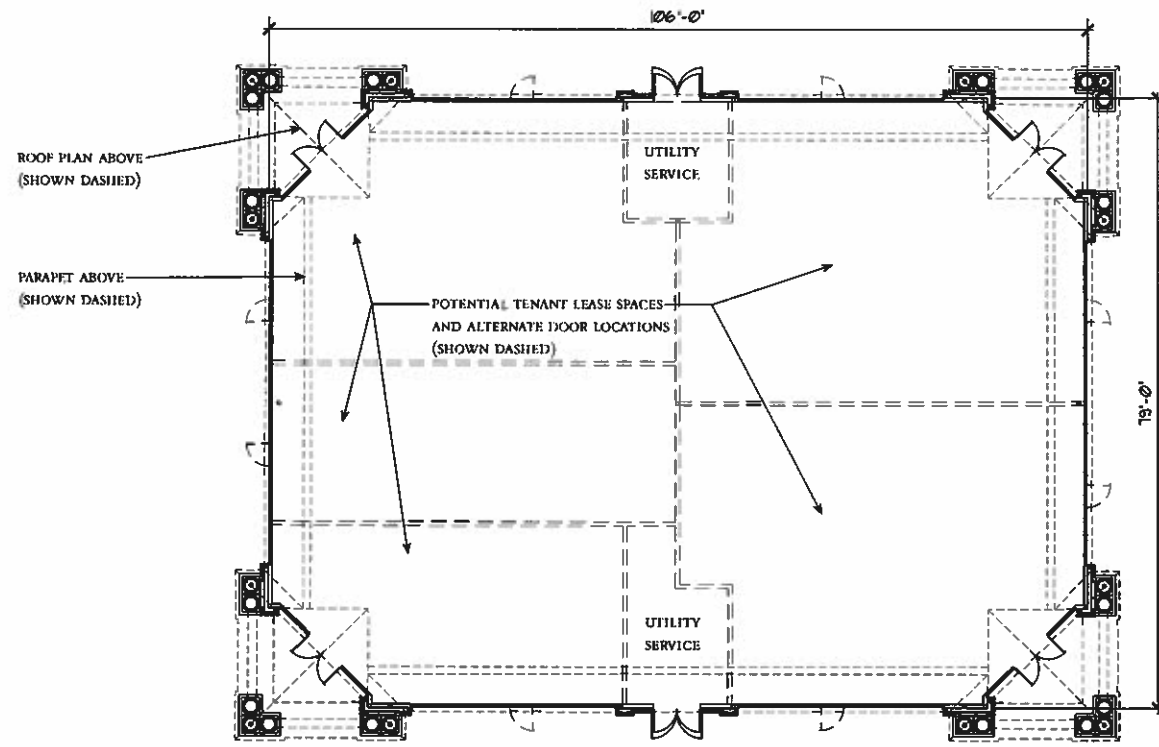
SOUTH ELEVATION

BUILDING "A"

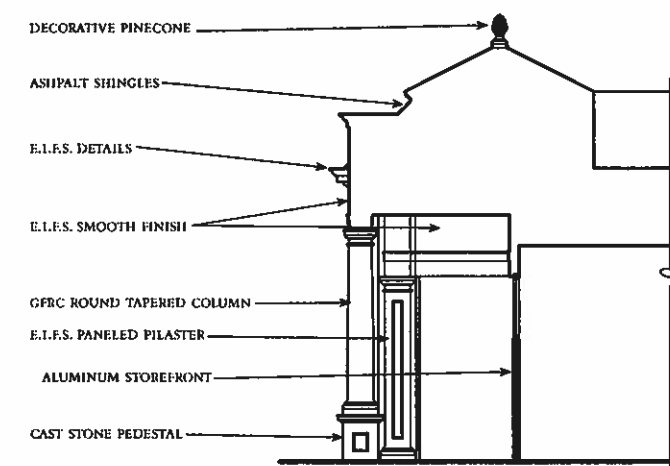
STREETS OF BRENTWOOD
BRENTWOOD, CALIFORNIA



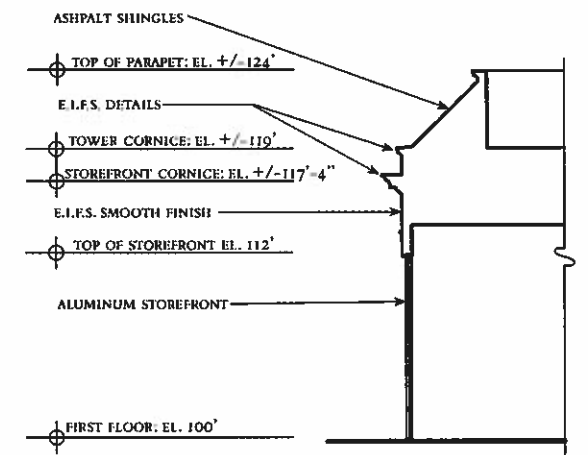
NOV 19 2007
CITY OF BRENTWOOD
COMMUNITY DEVELOPMENT DEPT.
16 November 2007



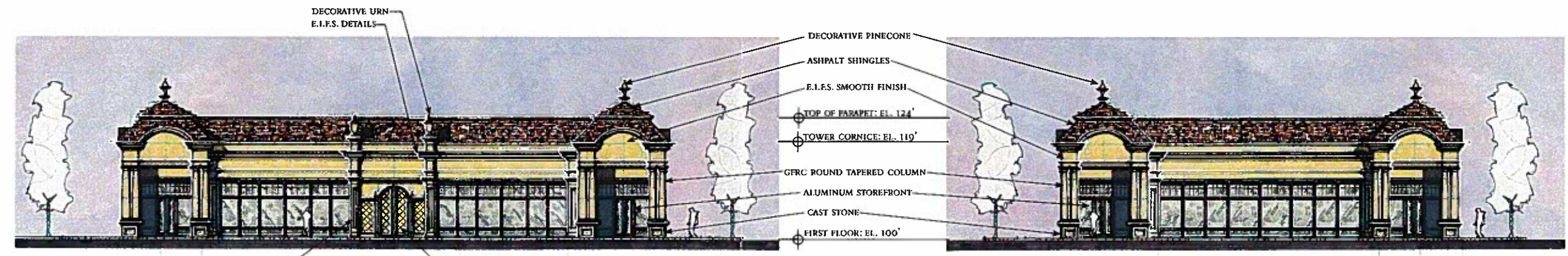
PLAN



SECTION THROUGH ENTRY TOWER

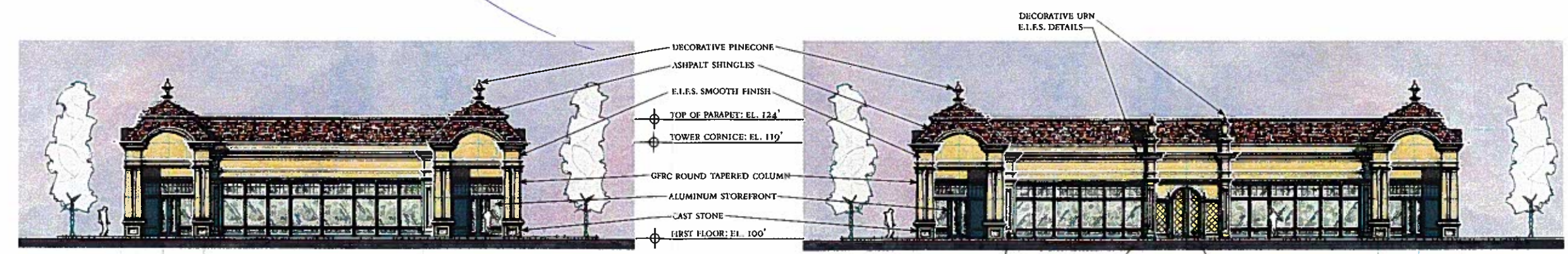


SECTION THROUGH STOREFRONT



SOUTH ELEVATION

WEST ELEVATION



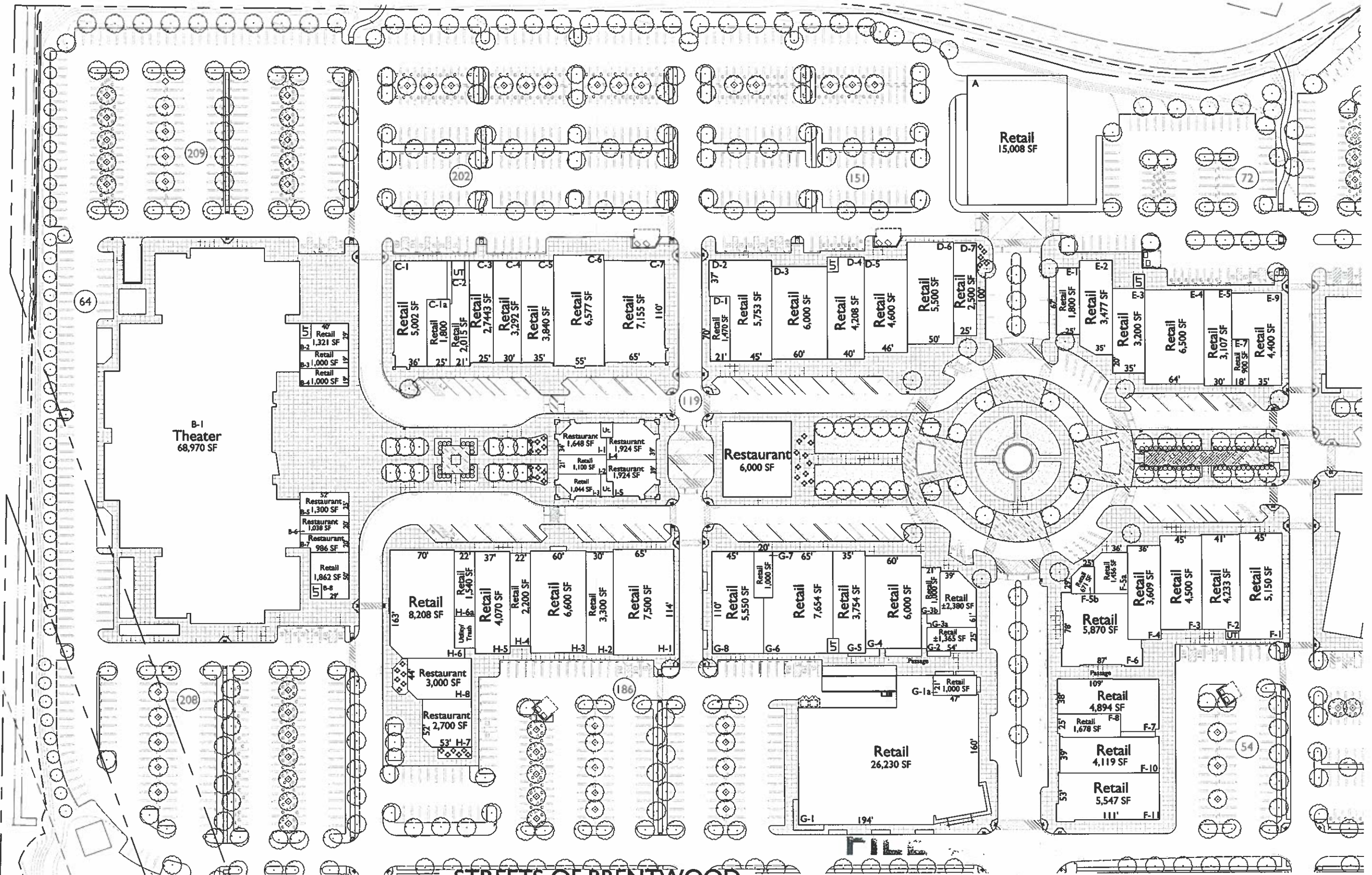
EAST ELEVATION

NORTH ELEVATION

BUILDING "I"
STREETS OF BRENTWOOD
BRENTWOOD, CALIFORNIA



SITE DATA
 Site Area: ±53.67 Ac.
 Theater: ±68,970 s.f.
 Retail: ±339,753 s.f.
 Total Area: ±408,723 s.f.



STREETS OF BRENTWOOD
 BRENTWOOD, CALIFORNIA

DO NOT REMOVE

FILE # DR 07-15 9 2007

NOVEMBER 16, 2007



Prepared for: Continental Retail Development & Retail West, Inc.

CONTINENTAL RETAIL DEVELOPMENT
 150 E. Broad Street Columbus, Ohio 43215
 614.221.1800 Office 614.221.6365 Fax
 www.continental-realestate.com
 Jeff Zeigler, jzeigler@continental-realestate.com

RETAIL WEST, INC.
 2034 Union Street San Francisco, California 94123
 415.292.7200 Office 415.775.1858 Fax
 www.retailwestinc.com
 Robert Kashian, rkashian@retailwestinc.com

